



CHATTERTON | REES



Ground Floor Flat 98 Farm Lane, London, SW6 1QH
Asking price £700,000





Ground Floor Flat 98 Farm Lane

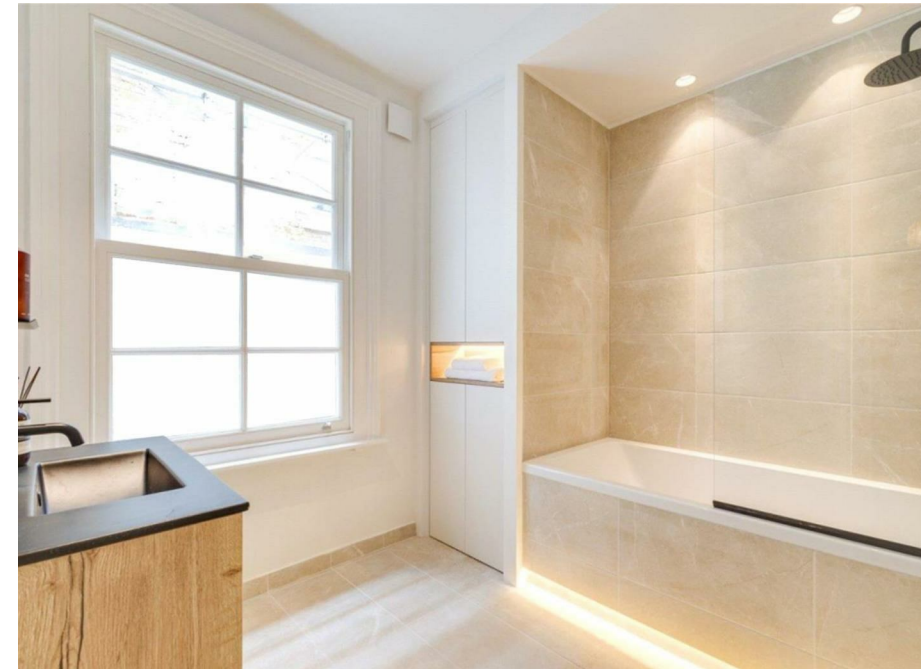
London, SW6 1QH

- 2 Bedrooms
- Open Plan Kitchen/Reception Room
- Large Garden
- 1 Bathroom
- Recently Refurbished
- 998 Year Lease

A stunning two double bedroom, ground floor flat with a generous private garden on Farm Lane in the heart of Fulham Broadway.

The property spans just shy of 700 sq. ft. and is immaculately presented throughout. The flat offers a modern open plan kitchen/reception room which leads out to the large, private garden which is an ideal spot for alfresco dining. Both bedrooms are spacious and bright and are served by a stylish bathroom. There is also a separate cloakroom.

Asking price £700,000





Directions

Farm Lane is located moments from Fulham Broadway Underground station, West Brompton Overground and the famous Michelin starred Harwood Arms. A vast array of shops, bars and restaurants can be found on the doorstep and the local cinema and gym are also only moments away. The district line, overground and several local bus routes, connect the area to nearby Chelsea and central London.





